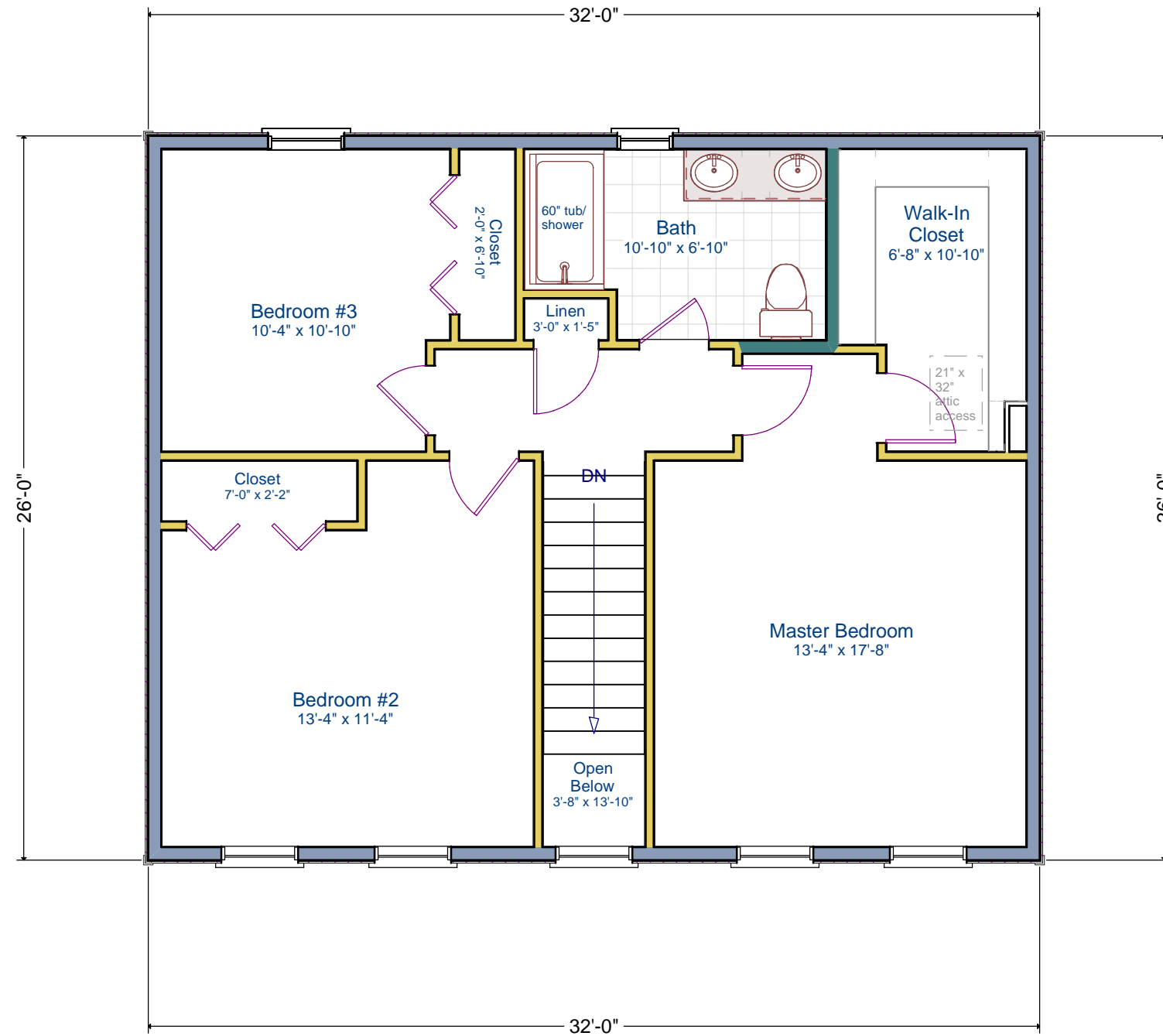


*Exterior Deck/Steps shown only as examples of what could be built. Actual deck/steps tbd on site and reconciled against the exterior step allowance.



THIS DRAWING IS PROVIDED BY FORTIN CONSTRUCTION, INC. TO BE USED FOR INFORMATIONAL AND ILLUSTRATIVE PURPOSE ONLY. THE INFORMATION PRESENTED ON THIS DRAWING HAS NOT BEEN PREPARED OR REVIEWED BY A REGISTERED ARCHITECT. FORTIN CONSTRUCTION, INC. SUGGESTS THAT ITS CUSTOMERS SEEK THE SERVICES OF A REGISTERED ARCHITECT TO OBTAIN TECHNICAL BLUEPRINTS IF THE CUSTOMER DESIRES.

Final Plans

Approved By/On: _____

Flooring Breaks

Approved By/On: _____

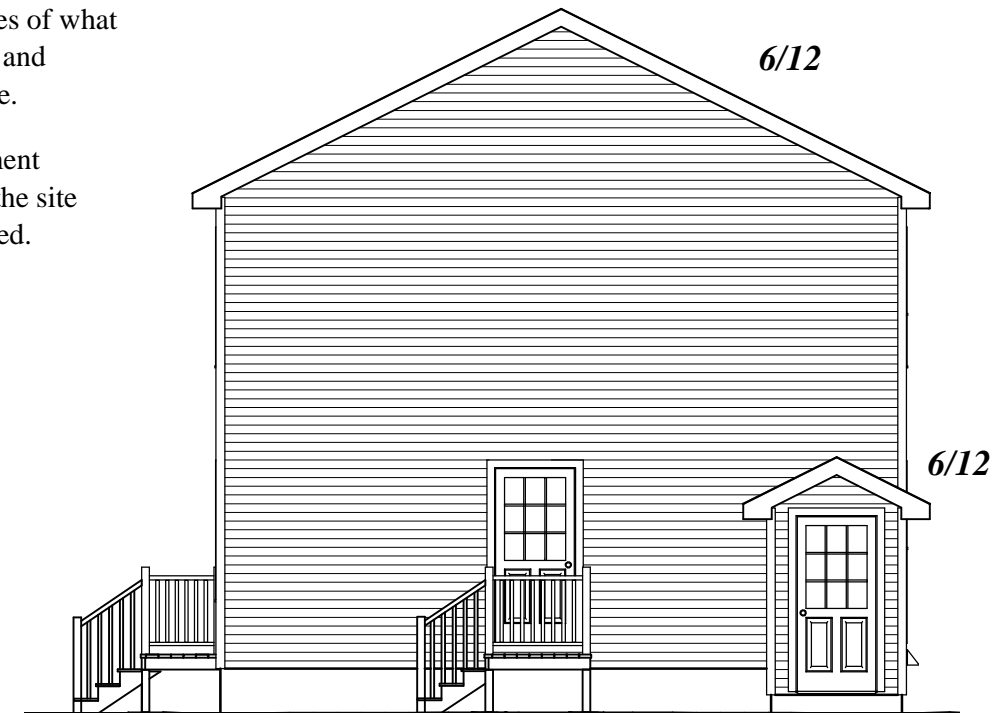
Second Floor



Front Elevation

*Exterior Deck/Steps shown only as examples of what could be built. Actual deck/steps tbd on site and reconciled against the exterior step allowance.

*Actual size & placement of daylight basement area to be determined by the grade level of the site at the time that the foundation is being poured.

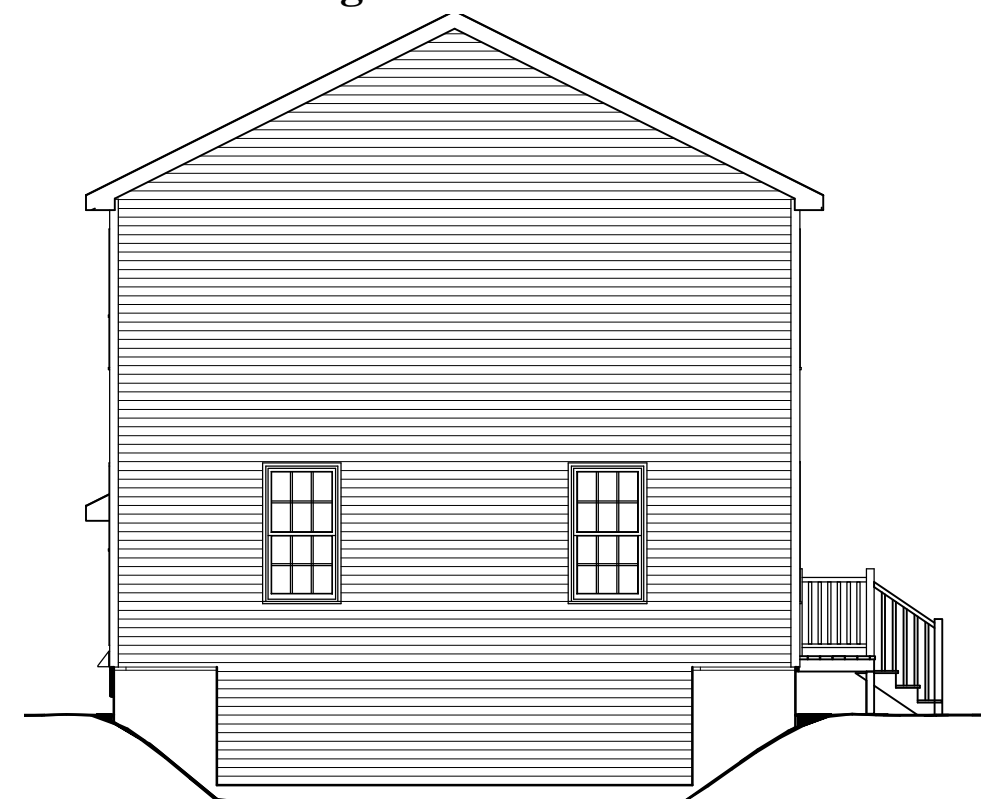


Right Elevation



Rear Elevation

vinyl double channel lineal lined up with corner board



Left Elevation

THIS DRAWING IS PROVIDED BY FORTIN CONSTRUCTION, INC. TO BE USED FOR INFORMATIONAL AND ILLUSTRATIVE PURPOSE ONLY. THE INFORMATION PRESENTED ON THIS DRAWING HAS NOT BEEN PREPARED OR REVIEWED BY A REGISTERED ARCHITECT. FORTIN CONSTRUCTION, INC. SUGGESTS THAT ITS CUSTOMERS SEEK THE SERVICES OF A REGISTERED ARCHITECT TO OBTAIN TECHNICAL BLUEPRINTS IF THE CUSTOMER DESIRES.

Final Plans

Approved By/On: _____

Flooring Breaks

Approved By/On: _____

Elevations & Perspectives



THIS DRAWING IS PROVIDED BY FORTIN CONSTRUCTION, INC. TO BE USED FOR INFORMATIONAL AND ILLUSTRATIVE PURPOSE ONLY. THE INFORMATION PRESENTED ON THIS DRAWING HAS NOT BEEN PREPARED OR REVIEWED BY A REGISTERED ARCHITECT. FORTIN CONSTRUCTION, INC. SUGGESTS THAT ITS CUSTOMERS SEEK THE SERVICES OF A REGISTERED ARCHITECT TO OBTAIN TECHNICAL BLUEPRINTS IF THE CUSTOMER DESIRES.

Final Plans

Approved By/On: _____

Flooring Breaks

Approved By/On: _____

**Elevations &
Perspectives**